

www.theicph.com

ISBN: 978-623-90032-5-8



PROCEEDINGS

The 6th INTERNATIONAL CONFERENCE ON *Public Health*

Best Western Premier Hotel
Solo, Central Java, Indonesia

October 23-24, 2019



THEME:

Strengthening Hospital Competitiveness
to Improve Patient Satisfaction and
Better Health Outcomes

THE 6th INTERNATIONAL CONFERENCE ON PUBLIC HEALTH 2019

Theme:

“STRENGTHENING HOSPITAL COMPETITIVENESS FOR PATIENT SATISFACTION AND BETTER HEALTH OUTCOMES”

Board of Reviewers:

Prof. Luigi Siciliani
Prof. Nazmi Sari
Prof. Adang Bachtiar
Prof. Paul R Ward
Prof. Keon-Hyung Lee
Prof. Adrian Schoo
Prof. Bhisma Murti
Dr. Tonang Dwi Ardyanto
Dr. Hanung Prasetya

Organized by:

Masters Program in Public Health,
Universitas Sebelas Maret

In Collaboration with:

University of York
Flinders University
Florida State University
University of Saskatchewan
Indonesian Public Health Association (IAKMI)
Universitas Indonesia
Yayasan Karya Sains
School of Health Polytechnics, Surakarta
District Government of Surakarta, Central Java

Date : **October 23-24, 2019**
Venue : **Best Western Premier Hotel, Solo, Indonesia**
Website : **www.theicph.com**
Email : **icphuns@gmail.com**

The 6th International Conference on Public Health

“Strengthening Hospital Competitiveness for Patient Satisfaction and Better Health Outcomes”

Best Western Premier Hotel, Solo, Indonesia

October 23-24, 2019

Advisers:

Prof. Jamal Wiwoho

Prof. Sutarno

Prof. Agus Kristiyanto

Dr. Dwi Purnanto

Chair of the Conference

Prof. Bhisma Murti, dr., MPH, MSc, PhD

Secretary of the Conference

Dr. Hanung Prasetya SKp, SPsi, MSi

V. Ganis Tyas Amartani, SE

Karlinda, S.K.M

Prissy Verasita, S.ST

Fara Khansa Azizah, STR. Keb

Putu Sri Rahayu, STR. Keb

Editors:

Ika Yuli Ayuningrum, MPH

Aris Widiyanto, MPH

Siti Kholifah, MPH

Akhmad Azmiardi, SKM

Asruria Sani Fajriah, SST

Ayu Anulus, SST

ISBN: 978-623-90032-5-8

First Printing: 2019

ISBN 978-623-90032-5-8



Published by:

Masters Program in Public Health, Universitas Sebelas Maret

Jl. Ir Sutami 36A, Surakarta 57126. Central Java, Indonesia

Telp/Fax: (0271) 632 450 ext.208

First website: <http://pasca.uns.ac.id/s2ikm>

Second website: www.theicph.com. Email: icphuns@gmail.com.

TABLE OF CONTENT

Cover	i
Preface	iii
Table of Content	v
I. Background	1
II. Mission	5
III. Theme	5
IV. Aim and Objectives	5
V. Venue and Date	6
VI. Participants	6
VII. Curriculum Vitae	6
VIII. Programs	9
IX. Invited Speakers	9
X. Schedule of International Conference on Public Health	12
XI. Subject	
How to Develop Persuasive Health Promotion as a Support System for Behavior Change Using Neuro-Linguistic Programming	17
<i>Dr. Hanung Prasetya</i>	
XII. Abstract Oral Presentation	23
XIII. Oral Presentation Schedule	368
XIV. The 6 th ICPH 2019 Organizing Committee	388

TOPIC I: EPIDEMIOLOGY AND PUBLIC HEALTH

Effect of Hypertension on Cognitive Function Disorder among the Elderly in Medan, North Sumatera	24
<i>Mayang Sari Ayu, Faisal Balatif, Mahdiah, Meri Susanti Dewi Pangestuti, Makmur Sinaga</i>	
The Association between Organophosphate Pesticide Exposure and Erythrocyte Sedimentation Rate among Farmers in Sumberejo Village, Magelang, Central Java	25
<i>Desi Putri Utami, Onny Setiani, Hanan Lanang Dangiran, I Made Djaja</i>	
Determinants of Coronary Heart Disease among Outpatients in Ku- pang, East Nusa Tenggara	26
<i>Intje Picauly</i>	
Biological, Social Economic, and Environmental Determinants of Child Pneumonia after Earthquake: an Evidence from West Nusa Tenggara	27
<i>Nur Isniani Ningsih, Harsono Salimo, Setyo Sri Rahardjo</i>	
Psychological and Social Factors Affecting the Risk of HIV Infection in Jepara, Central Java	28
<i>Ita Fijanah Puspita, Uki Retno Budihastuti, Vitri Widyaning- sih</i>	

Factors Associated the Occurance of Hypertension in High School Students <i>Mayasari Kurnianingsih, Yulia Lanti Retno Dewi, Eti Poncorini Pamungkasari</i>	29
Biological and Social Economic Factors Affecting Treatment Complaint and Cure among Tuberculosis Patients in Yogyakarta <i>Tri Godha Fitriani, Setyo Sri Rahardjo, Hanung Prasetya</i>	30
Effectiveness of Chronic Disease Control Club on Blood Sugar Level Control in Sukoharjo, Central Java <i>Fajar Alam Putra, Dono Indarto, Ruben Dharmawan</i>	31
Risk Factors of Diarrhea Incidence in Children Aged 6-24 Months at Mangulewa and Keloda Community Health Centers, Ngada, Kupang, East Nusa Tenggara <i>Dafrosa Luni, Imelda Februati Ester Manurung, Mareta Bakale Bakoi, Marylin Susanti Junias, Sabina Gero</i>	32
Effectiveness of Coagulant and Disinfectant on Water Treatment in East Nusa Tenggara <i>Muhammad Ardiansyah Nurawi, Marylin Susanti Junias, Ketut Mahendra Kuswara</i>	33
Predisposing Factors of Solid Medical Waste Management at Penyangga Perbatasan Betun Hospital, East Nusa Tenggara <i>Marlince I. Ninef, Anderias Umbu Roga, Jacob Ratu</i>	34
Association between Environmental Factors and Tuberculosis among Children Aged 0-14 Years in Kupang, East Nusa Tenggara <i>Merina Regifana Loak, Imelda F.E. Manurung, Jacob M. Ratu Pius Weraman, Anderias Umbu Roga</i>	35
Factors Associated with Risky Behavior for HIV/AIDS Transmission among Youth Organization in Depok, West Java <i>Nunuk Nugrohowati, Ria Maria Theresa</i>	36
Factors Associated with Stunting among Children 1 – 3 Years of Age in Batu City, East Java <i>Juin Hadisuyitno, B. Doddy Riyadi</i>	37
The Association between Personal Hygiene and Egg Positive Rate of Enterobius Vermicularis among Primary School Children <i>Ratna Muliawati, Mushidah, Siti Musyarofah</i>	38
Spatial Analysis of the Distribution and Transmission of Clinical Scabies <i>Yudhi Wibowo, Nendyah Roestijawati, Dyah Krisnansari, Agoes Y Purnomo</i>	39

Factors Associated with the Rejection of Child Immunization: a Systematic Review <i>Yunia Nur Fadhillah</i>	137
Relationship between Social Support and Visit to the Elderly Integrated Health Service Posts in Kupang, East Nusa Tenggara <i>Melton Pairikas, Muntasir, Pius Weraman</i>	138
Sex Behavior and the Risk of HIV among Male Military Personnel: a Meta-Analysis <i>Ayu Anulus, Bhisma Murti, Hanung Prasetya</i>	139
The Effect of Work Engagement and Religiosity on Burnout among Dentists at Primary Care Clinics <i>Mira Zoraya, Heru Kurnianto Tjahjono, Arlina Dewi</i>	140
TOPIC III: MATERNAL AND CHILD HEALTH	
Issues, Challenges, and Potential of Palliative Care in Pediatric Nursing: a Systematic Review <i>Aris Widiyanto, Rina Tri Handayani, Joko Tri Atmojo</i>	142
Factors Affecting Nutritional Status among Children Under Five Years of Age in Farmer Families, in East Kupang, East Nusa Tenggara <i>Marthen Robinson Pellokila, Intje Picauly, Geertruida Margaret Sipahelut</i>	143
“Bloodvista” Measurement of Postpartum Blood Loss <i>Elsye Maria Rosa, Aulia Rahmi, Asri Hidayat</i>	144
Factors Associated with Malnutrition among Lactating Mothers in Middle South Timor, East Nusa Tenggara <i>Wenselaus Eric Paun, Sabina Gero, Pius Weraman</i>	145
Factors Affecting the Occurrence of Stunting among Children Under 2 Years of Age in Pemalang, Central Java <i>Arwinda Nugraheni, Arya Reza Gama, Agung Wibowo, Murni, Hari Peni Julianti, Dea Amarilisa Adespin, Teddy Wahyu Nugroho, Diah Rahayu Wulandari</i>	146
The Relationship between Age, Nutrition Status, and Anemia among Pregnant Mothers <i>Devillya Puspita Dewi, Kuntari Astriana</i>	147
Pregnancy Experience of Mothers with Human Immunodeficiency Virus Infection <i>Lellyawaty, Dhesi Ari Astuti, Yekti Satriyandari</i>	148

159	The Correlations between Carbohydrate Intake, Nutritional Status of Pregnant Woman, and Birth Weight in Jember, East Java <i>Brillia Firsti Winasandis, Didik Tamtomo, Sapja Anantanyu</i>	169
160	Determinants of Antenatal Care Visit in Dintor Community Health Center, Manggarai, East Nusa Tenggara <i>Reineldis E. Trisnawati, Pius Weraman, Stefanus P. Manongga</i>	170
161	Energy and Protein Consumption, Infectious Disease History, and Academic Achievement, in Stunted and Non-Stunted Primary School Students in Malang, East Java <i>I Nengah Tanu Komalyana, AAG Anom Aswin, Tasya Adinda Agustina</i>	171
162	Factors Affecting Female Early Marriage: A Systematic Review <i>Brilian Dini MA. Iballa, Fitria Siswi Utami, Esitra Herfanda</i>	172
163	Associations of Knowledge and Attitude with Menopausal Readiness among Women in Sleman, Yogyakarta <i>Endang Puji Ati, Murni, Almira Gitta Novika</i>	173
164	Factors Affecting Depression in Pregnant Mothers: A Systematic Review <i>Ummu Mar'atul Udzma, Anhari Achadi</i>	174
165	Experience and Expectation in Women-Midwife Partnership of Midwifery Care: A Systematic Review <i>Rizky Vaira, Dhesi Ari Astuti, Yekti Satriyandari</i>	175
166	Effect of Nipple Stimulation on the Second Stage of Delivery Time among Delivery Mothers in Bengkulu <i>Yulita Elvira Silviani, Violita Siska Mutiara, Ajeng Ela Fathurrohmah</i>	176
167	Promotion and Support for Successful Exclusive Breastfeeding: a Systematic Review <i>Ayu Egayosi Prambandari, Nidatul Khofiyah, Dewi Rokhanawati</i>	177
168	Stunting in Pre-School Children in Developing Countries by Maternal Characteristics: A Systematic Review <i>Rizka Adela Fatsena</i>	178
168	Factors Associated with the Low Use of Intra Uterine Device Contraceptive: a Systematic Review <i>Siti Noor Hasanah, Ismarwati, Sri Ratnaningsih</i>	179

hospital, even banking. Since the middle of March 2016 he has given hypnosis training of over 1800 people with a background of Diploma to doctoral degrees.

PROGRAMS

The 6th ICPH consists of four core programs:

1. Symposium
2. Workshop
3. Oral presentation
4. Poster presentation

Participants of ICPH are welcome to submit abstracts of their research work and present in either the oral presentation or poster presentation formats. Bear in mind that all abstracts of research work in any branch of public health are welcome for submission. The abstracts include but are not restricted to the current ICPH theme "Strengthening Hospital Competitiveness for Patient Satisfaction and Better Health Outcomes".

The collection of abstracts is published both in printed and electronic forms in the 6th ICPH proceedings 2019. Each abstract is assigned with Digital Object Identifier (DOI) and its metadata are sent to CrossRef. The printed ICPH proceedings are published and distributed to the participants at the time of the conference. After the conference, the electronic ICPH proceedings are downloadable from the ICPH website at www.theicph.com.

ICPH Proceedings is currently abstracted and indexed in Crossref (with DOI assigned to each abstract or article), OAIster (OCLC/ WorldCat), Indonesia One Search (IOS), Scientific Indexing Services, BASE, Neliti, Google Scholar, CABI's Global Health, Microsoft Academic Search, Academic Resource Index, ResearchGate, and Index Copernicus International (ICI), and Thomson Reuters. We are making efforts to get it abstracted and indexed in even broader international databases.

INVITED SPEAKERS

1. Symposium (Day 1)



Prof. Luigi Siciliani

Programme Director, MSc Health Economics,
University of York, York, United Kingdom

Topic: "Hospital Competition and Quality: An
Overview of Different Empirical Approaches and
Results"



Prof. Nazmi Sari

Graduate Program Admission Chair, Department of
Economics, University of Saskatchewan, Saskatoon,
Canada

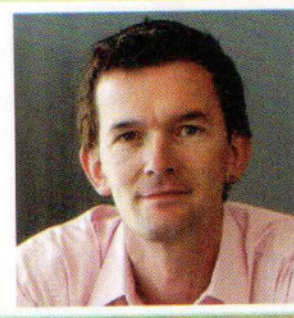
Topic: "How to Improve Efficiency, Quality and
Patient Safety in Competitive Hospital Markets:
Lessons Learned from Implementation of Lean in



Prof. Adang Bachtiar

Faculty of Public Health, Universitas Indonesia, Jakarta, Indonesia. Chair, Advisory Board, Indonesian Public Health Association (IAKMI)

Topic: "Health Promotion in Hospitals – A Strategy to Improve Quality in Health Care"



Prof. Paul R Ward

Professor of Public Health and Higher Degrees by Research Coordinator, College of Medicine & Public Health, Flinders University, Adelaide, Australia

Topic: "Waiting for, Waiting in, and their Implication for Patient (Dis)trust in Public and Private Hospitals"



Prof. Adrian Schoo

Fellow of ANZAHPE, Prideaux Centre for Research in Health Professions Education, College of Medicine and Public Health, Flinders University, Adelaide, Australia

Topic: "Can Competition be Reconciled with Collaboration in Health Care to Optimize Equity of Access to Quality Care? A Systems Thinking Approach to Manage Complexity"



Dr. Tonang Dwi Ardyanto

Vice Director, UNS Teaching Hospital, Universitas Sebelas Maret, Surakarta, Indonesia

Topic: "How UNS Teaching Hospital Deals with Financial Pressure to Survive and Improve Patient Health Outcomes in the Hospital Care Competitive Market"

2. Workshop (Day 2)



Prof. Luigi Siciliani

Programme Director, MSc Health Economics, University of York, York, United Kingdom

Topic: "How to Publish Papers in a Prestigious Journal: Tips from an Experienced Author and Editor of the Journal of Health Economics"



Prof. Keon-Hyung Lee

Director, Askew School of Public Administration and Policy, Florida State University, Tallahassee, United States of America

Topic: "How to Apply Structural Equation Modeling in Hospital Care Research"



Prof. Bhisma Murti

Head, Masters Program in Public Health, Graduate School, Universitas Sebelas Maret, Surakarta, Indonesia. Chair, ICPH

Topic: "How to Choose the Right Model out of Regression, Path Analysis, Structural Equation Model, and Multilevel Analysis"



Prof. Adrian Schoo

Fellow of ANZAHPE, Prideaux Centre for Research in Health Professions Education, College of Medicine and Public Health, Flinders University, Adelaide, Australia

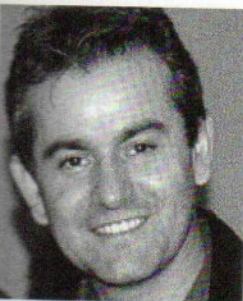
Topic: "How to Apply Systems Thinking to Improve Health Care System Performance"



Dr. Hanung Prasetya

Secretary, International Conference on Public Health. Founder and Owner, Sinergy Mind Health Indonesia. International Licensed Master Practitioner of NLP, from The Society of NLP, USA. Lecturer, School of Health Polytechnics, Ministry of Health, Surakarta, Indonesia.

Topic: "How UNS Teaching Hospital Deals with Financial Pressure to Survive and Improve Patient Health Outcomes in the Hospital Care Competitive Market"



Prof. Nazmi Sari

Graduate Program Admission Chair, Department of Economics, University of Saskatchewan, Saskatoon, Canada

Topic: "How to Conduct Economic Evaluation for Health/Healthcare Interventions and Programs: An Introduction to Its Methods, Data Collection, and Analysis"

FACTORS ASSOCIATED WITH STUNTING AMONG CHILDREN 1 - 3 YEARS OF AGE IN BATU CITY, EAST JAVA

Juin Hadisuyitno, B. Doddy Riyadi

Diploma III Program of Nutrition, Department of Nutrition,
School of Health Polytechnics, Ministry of Health, Malang

ABSTRACT

Background: Stunting status among children indicate a chronic malnutrition that illustrate the inhibition of growth. Stunted in children can reduce the cognitive intelligence of children facing a greater likelihood of growing into adults who are less educated, poor, less healthy and more vulnerable to non-communicable diseases. This study aimed to determine the factors associated with stunting among children around 1 to 3 years of age in Batu City, East Java.

Subject and Method: This was a case-control study conducted in Batu City, East Java. A total of 90 children around 1 to 3 years of age was selected for this study, consisting of 45 stunted and 45 non-stunted children. The dependent variable was stunting. The independent variables were low birth weight, exclusive breastfeeding, complementary feeding, history of illness, completeness of immunization, duration of breastfeeding, and length of birth. The data were collected by questionnaire and analyzed by Chi-square.

Result: The risk of stunting increased by low birth weight (OR= 1.75; 95% CI=0.39 to 7.81; p= 0.714), non-exclusive breastfeeding (OR= 1.11; 95% CI= 0.46 to 2.68; p= 0.822), inappropriate complementary feeding (OR= 2.07; 95% CI=0.89 to 4.83; p= 0.09), history of illness (OR= 2.00; 95% CI= 0.61 to 6.52; p= 0.245), uncompleted immunization (OR= 0.39; 95% CI= 0.12 to 1.23; p= 0.980), duration of breastfeeding < 1 year (OR= 0.41; 95% CI= 0.16 to 1.06; p= 0.630), but they were not statistically significant. The risk of stunting increased by length birth < 48 cm (OR= 0.22; 95% CI=0.07 to 0.72; p= 0.008), and it was not statistically significant.

Conclusion: Length of birth < 48 cm increases the risk of stunting among children aged 1-3 years.

Keywords: stunting, low birth weight, length of birth

Correspondence:

Juin Hadisuyitno. Diploma III Program of Nutrition, Department of Nutrition, School of Health Polytechnics, Ministry of Health Malang, East Java. Email: juinhadi@gmail.com. Mobile: 081555653485.

ENERGY AND PROTEIN CONSUMPTION, INFECTIOUS DISEASE HISTORY, AND ACADEMIC ACHIEVEMENT, IN STUNTED AND NON-STUNTED PRIMARY SCHOOL STUDENTS IN MALANG, EAST JAVA

I Nengah Tanu Komalyna, AAG Anom Aswin, Tasya Adinda Agustina

Department of Nutrition Program, School of Health Polytechnics,
Ministry of Health, Malang

ABSTRACT

Background: Stunting is a condition of failure to thrive due to chronic malnutrition. Stunting is not only caused by nutritional factors, but also health factors. Stunted children may have sub-normal intelligence. This study aimed to determine differences in level of consumption (energy and protein), health status, and academic achievement in stunted and non-stunted primary school students in Malang, East Java.

Subjects and Method: This was a case-control study conducted in the State Primary Schools 1, 2, and, 4 in the villages of Wandanpuro, Bululawang District, Malang, East Java, from November to December 2018. A total of 70 primary school students were selected for this study. The dependent variable was stunting status. The independent variables were level of consumption (energy, protein), health status, and academic achievement. The data were collected by questionnaire and analyzed by a multiple logistic regression.

Results: As many as 62.9% stunted students had the level of energy consumption <70% of energy adequacy rate. 85.6% had the level of protein consumption <80% of protein adequacy rate. 28.6% had a history of infectious disease. Students with energy consumption level <70% of recommended dietary allowance (RDA) (OR= 6.77; 95% CI= 2.31 to 19.84), protein consumption level <80% RDA (OR= 5.45; 95% CI= 1.96 to 15.18), history of infectious diseases (OR= 4.27; 95% CI= 1.06 to 17.17) were at risk of stunting. Stunted students had lower academic achievement than non-stunted students (OR= 1.99; 95% CI= 0.70 to 5.67).

Conclusion: Energy consumption level <70% RDA, protein consumption level <80% RDA, and history of infectious disease, increase the risk of stunting among primary school students.

Keywords: stunting status, energy consumption level, protein consumption level, history of infectious diseases

Correspondence:

I Nengah Tanu Komalyna, AAG Anom Aswin. Department of Nutrition Program, School of Health Polytechnics, Ministry of Health, Malang. Jl. Besar Ijen No. 77 C, Malang, East Java. Email: tanukomalyna65@gmail.com. Mobile: 08123393778.

The 6th International Conference on
Public Health
www.theicph.com



www.theijmed.com



www.thejmch.com



www.jepublichealth.com



www.thejhpb.com



www.thejhpm.com



Indexing and abstracting databases:



Masters Program in Public Health
Graduate Program, Universitas Sebelas Maret
Jl. Ir Sutami 36A, Surakarta 57126.
Telp/Fax: (0271) 632 450 ext. 208
First website: <http://s2ikm.pasca.uns.ac.id>
Second website: www.theicph.com
email: theicphuns@gmail.com

