

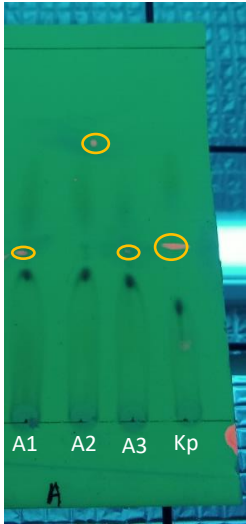
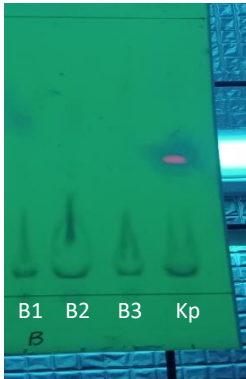
LAMPIRAN




Lampiran 1. Tabel-Tabel Penelitian


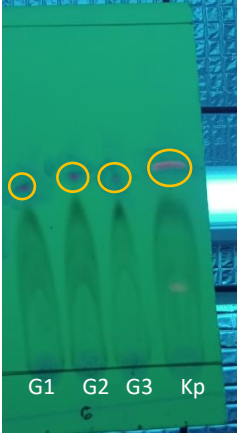

Tabel 1. Pelaksanaan Penelitian

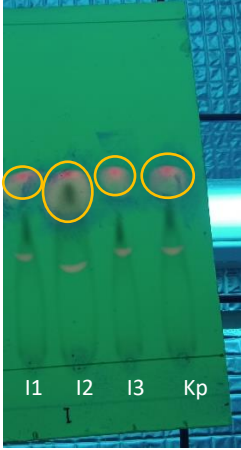

No.	Waktu	Kegiatan
1.	30-31 Desember 2022	Sampling sampel
2.	6-17 Januari 2023	Pengumpulan bahan penelitian
3.	20-27 Januari 2023	Pelaksanaan penelitian

Tabel 2. Hasil Sinar UV Uji Kualitatif Rhodamin B Pada Lipstik

No.	Kode Sampel	Warna	Gambar	Keterangan
1.	A	Berfluoresensi merah muda		Positif
2.	B	Tidak berfluoresensi		Negatif

3.	C	Tidak berfluoresensi		Negatif
4.	D	Tidak berfluoresensi		Negatif
5.	E	Tidak berfluoresensi		Negatif
6.	F	Tidak berfluoresensi		Negatif

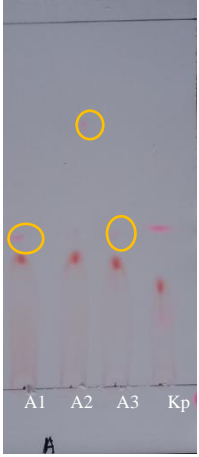
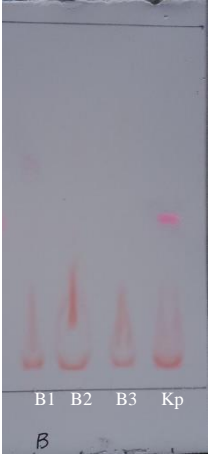

				
7.	G	Berfluoresensi merah muda		Positif
8.	H	Tidak berfluoresensi		Negatif
9.	I	Berfluoresensi merah muda		Positif

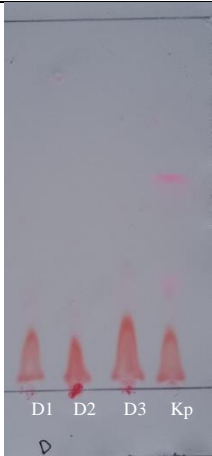
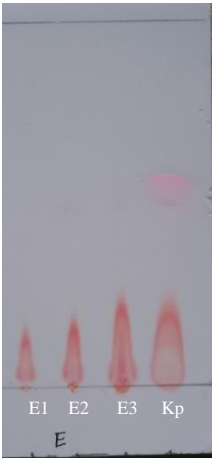

				
10.	J	Tidak berfluoresensi		Negatif

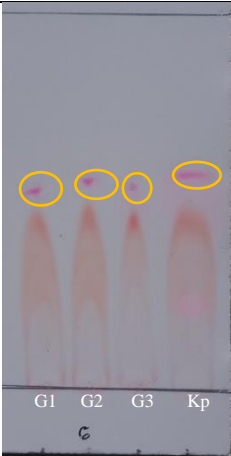
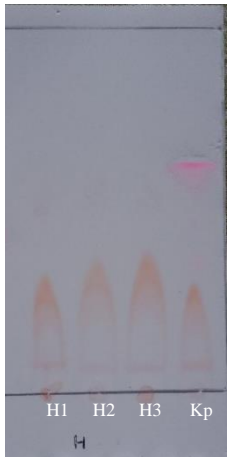
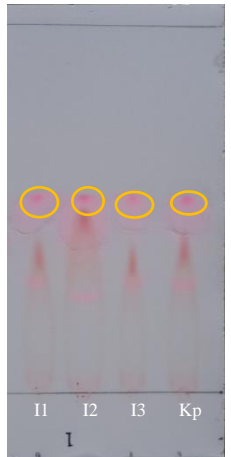
Keterangan:


- Kode A1, A2, dan A3 : Replikasi sampel A
- Kode B1, B2, dan B3 : Replikasi sampel B
- Kode C1, C2, dan C3 : Replikasi sampel C
- Kode Kp : Kontrol positif
- Dst

Tabel 3. Hasil Pengamatan Visual Uji Kualitatif Rhodamin B Pada Lipstik

No.	Kode Sampel	Gambar
1.	A	
2.	B	
3.	C	

4.	D	
5.	E	
6.	F	
7.	G	

		
8.	H	
9.	I	

10.	J	
-----	---	---

Keterangan:

- Kode A1, A2, dan A3 : Replikasi sampel A
- Kode B1, B2, dan B3 : Replikasi sampel B
- Kode C1, C2, dan C3 : Replikasi sampel C
- Kode Kp : Kontrol positif
- Dst

Tabel 4. Hasil Perhitungan Nilai Rf

No.	Sampel	Kode	Rf Sampel	Rata-Rata Rf Sampel	Rf Kontrol Positif
1.	A	A1	0,437	0,533	0,437
		A2	0,725		
		A3	0,437		
2.	G	G1	0,525	0,545	0,575
		G2	0,562		
		G3	0,55		
3.	I	I1	0,55	0,541	0,525
		I2	0,537		
		I3	0,537		

Lampiran 2. Perhitungan Hasil KLT

1. Perhitungan Analisis Kualitatif

a. Penyiapan Larutan Baku

Diketahui : Kadar = 0,2 mg/mL

Ditanya : Berat rhodamin B?

$$\text{Jawab : Berat rhodamin B} = \frac{0,2 \text{ mg}}{1 \text{ mL}} = \frac{20 \text{ mg}}{100 \text{ mL}}$$

Jadi, berat rhodamine B yang ditimbang sebesar 20 mg

b. Pembuatan Fase Gerak

Diketahui : etil asetat : methanol : {(ammonia 25% : air = 3 : 7)} = 15 : 3 : 3

Ditanya : Volume masing-masing larutan?

$$\text{Jawab : Etil asetat} = \frac{15}{21} \times 30 = 21,4 \text{ mL}$$

$$\text{Metanol} = \frac{3}{21} \times 30 = 4,28 \text{ mL} = 4,3 \text{ mL}$$

$$\text{Amonia} = \frac{3}{10} \times 30 = 9 \text{ mL}$$

$$\text{Aquadest} = \frac{7}{10} \times 30 = 21 \text{ mL}$$

$$\text{Amonia + air} = \frac{3}{21} \times 30 = 4,28 \text{ mL} = 4,3 \text{ mL}$$

c. Pembuatan Larutan Campur

Diketahui : dimetilformamida : asam fosfat = 95 : 5

Ditanya : Volume masing-masing larutan?

$$\text{Jawab : Dimetilformamida} = \frac{95}{100} \times 10 = 9,5 \text{ mL}$$

$$\text{Asam fosfat} = \frac{5}{100} \times 10 = 0,5 \text{ mL}$$

2. Perhitungan Nilai Rf

Rumus : $\frac{\text{Jarak (cm) yang ditempuh solut}}{\text{Jarak (cm) yang ditempuh fase gerak}}$

a. Sampel A

- $A1 = \frac{3,5}{8} = 0,437 \text{ cm}$
- $A2 = \frac{5,8}{8} = 0,725 \text{ cm}$
- $A3 = \frac{3,5}{8} = 0,437 \text{ cm}$
- Rata-rata = $\frac{0,437+0,725+0,437}{3} = 0,533 \text{ cm}$
- Kontrol Positif = $\frac{3,5}{8} = 0,437 \text{ cm}$

b. Sampel G

- $G1 = \frac{4,2}{8} = 0,525 \text{ cm}$
- $G2 = \frac{4,5}{8} = 0,562 \text{ cm}$
- $G3 = \frac{4,4}{8} = 0,55 \text{ cm}$
- Rata-rata = $\frac{0,525+0,562+0,55}{3} = 0,545 \text{ cm}$
- Kontrol Positif = $\frac{4,6}{8} = 0,575 \text{ cm}$

c. Sampel I

- $I1 = \frac{4,4}{8} = 0,55 \text{ cm}$
- $I2 = \frac{4,3}{8} = 0,537 \text{ cm}$
- $I3 = \frac{4,3}{8} = 0,537 \text{ cm}$
- Rata-rata = $\frac{0,55+0,537+0,537}{3} = 0,541 \text{ cm}$
- Kontrol Positif = $\frac{4,2}{8} = 0,525 \text{ cm}$

Lampiran 3. Alat dan Bahan yang Digunakan



Sampel



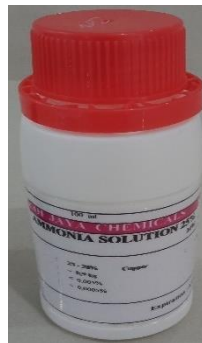
Alat



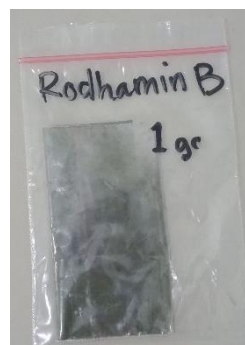
Asam Ortophospat



Dimetilformamida



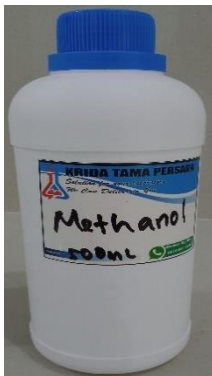
Amonia 25%



Rhodamin B



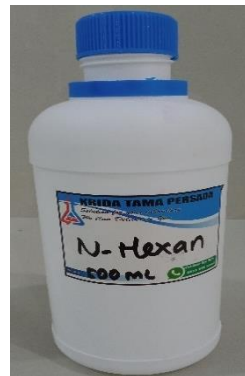
Aquades



Metanol



Etil Asetat

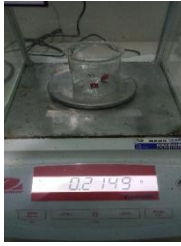


N-Hexan



Aluminium Foil

Lampiran 4. Dokumentasi Penelitian Sampel Yang Positif



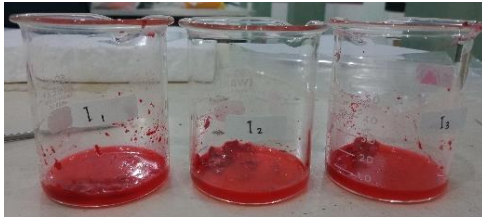
Penimbangan Sampel



Sampel A



Sampel G



Sampel I



Larutan Baku Rhodamin B



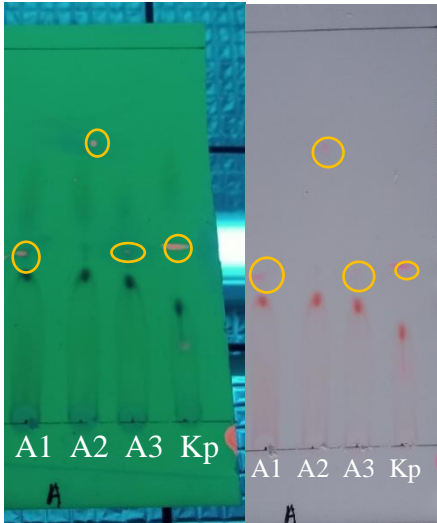
Proses Ekstraksi



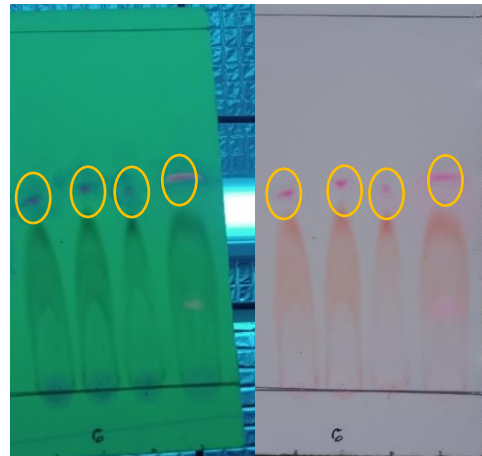
Penotolan Sampel



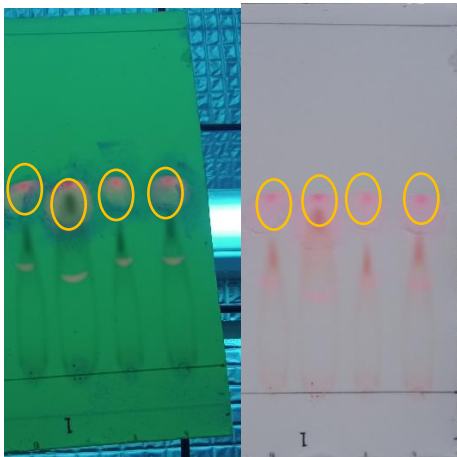
Proses Elusi



Hasil Uji Sampel A



Hasil Uji Sampel G



Hasil Uji Sampel I